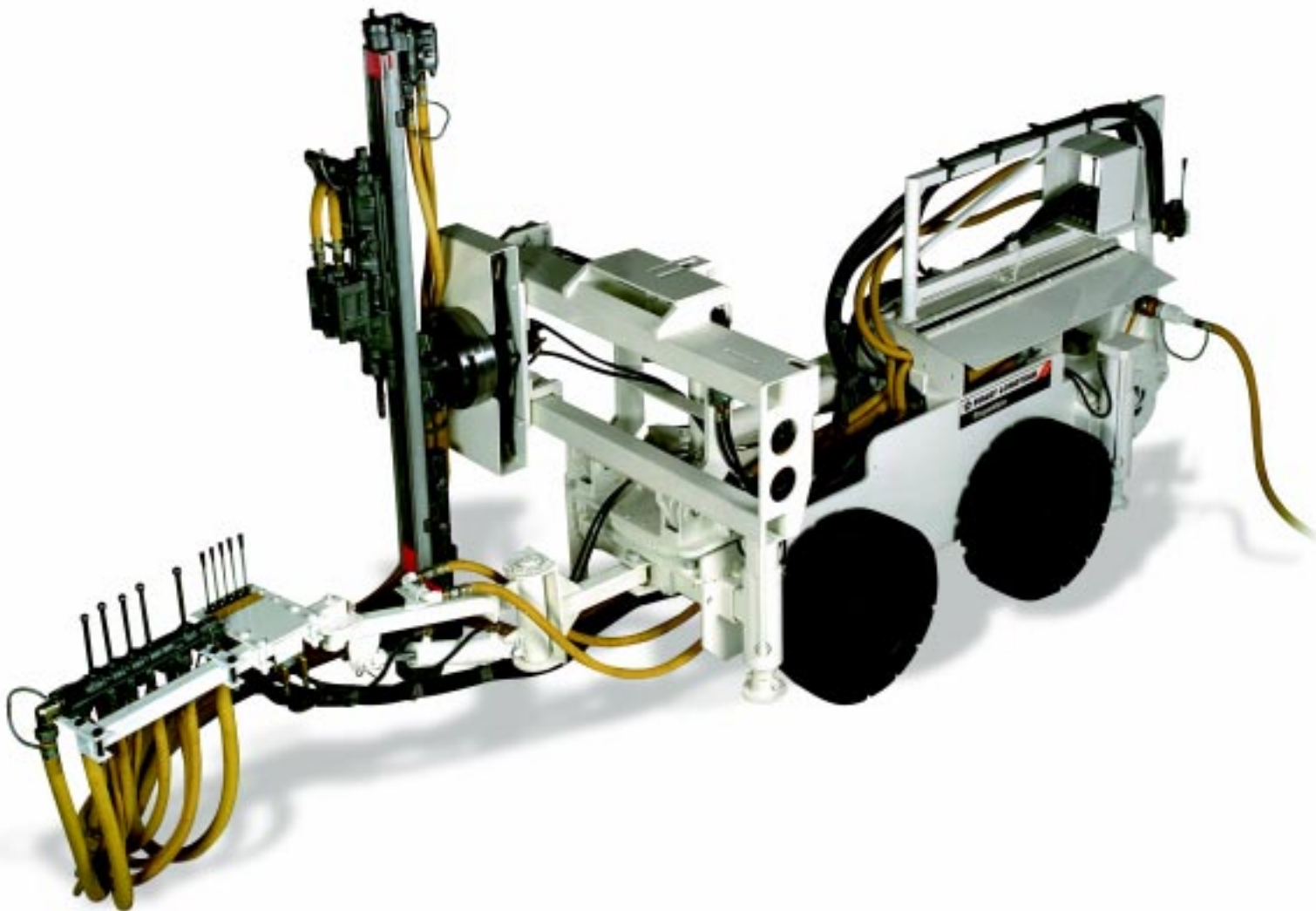


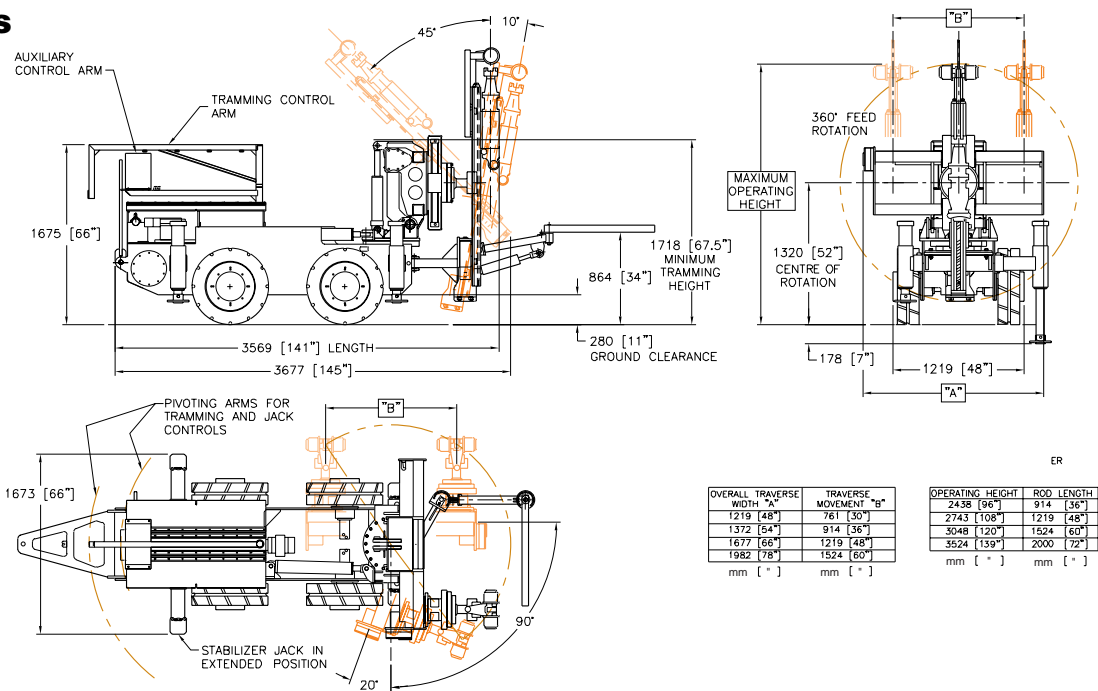
StopeMate

There's Nothing Else Like It On The Market



StopeMate

Specifications



HYDRAULIC POWERPACK

- 22.4 kW (30 HP) air motor with external oil reservoir
- 40 micron inline air filter with dirt indicator gauges
- tandem gear pump
- 5 micron in-the-tank hydraulic oil filter with dirt indicator and safety bypass
- sealed reservoir - 132 litres (35 gallons)
- lubricator†

CARRIER

- 4 wheel hydraulic skid steer
- gradeability: 45%
- 4 wheel independent drive system
- 4 wheel independent braking system (spring applied hydraulic release)
- solid rubber tires on steel rims
- motion control valving for precise control, even over rough terrain
- quick disconnect brakes for easy towing
- tow bar is standard equipment

DRILL POSITIONER

Dump

- -45/+10 via single hydraulic dump cylinder c/w lock valves
- expansion type pins

Traverse

- 15 point pivoting traverse assembly
- robust tubular steel frame
- adjustable pads to compensate for wear
- 1.2m (48") side to side movement†
- movement provided by self locking hydraulically driven feedscrew
- 360 degree hydraulic rotation
- heavy duty rotation bearing
- rack-and-pinion actuator
- dual hydraulic counterbalance holding valves

ROCKDRILL FEED

- Secan Mk5 pneumatic screw feed
- standard 1.2m (4") change†
- manual feed crowd

CONTROLS

- directional control valves for hydraulic positioning
- Secan drill control valve
- front mounted, multi-position, hydraulic arm to support the drill control valve
- pivoting tramping control arm (allows tramping from safest location)
- pivoting auxiliary control arm for jack functions

STABILIZER JACKS

- four hydraulic cylinders
- 0.38m (15") stroke to provide 0.17m (7") lift

ROCKDRILL

- Secan S36 independent rotation rockdrill

OPTIONS

- traverse widths 0.8m (30"), 0.9m (36") and 1.5m (60")
- feed lengths available for 0.9m (36"), 1.5m (60") and 2.0m (78") steel change
- oil lubricator -9 litres (2 gallon)
- grease lubricator -haL™ system
- laser hole alignment system
- electronic parts manuals (CatBase®)

† (Options Available)

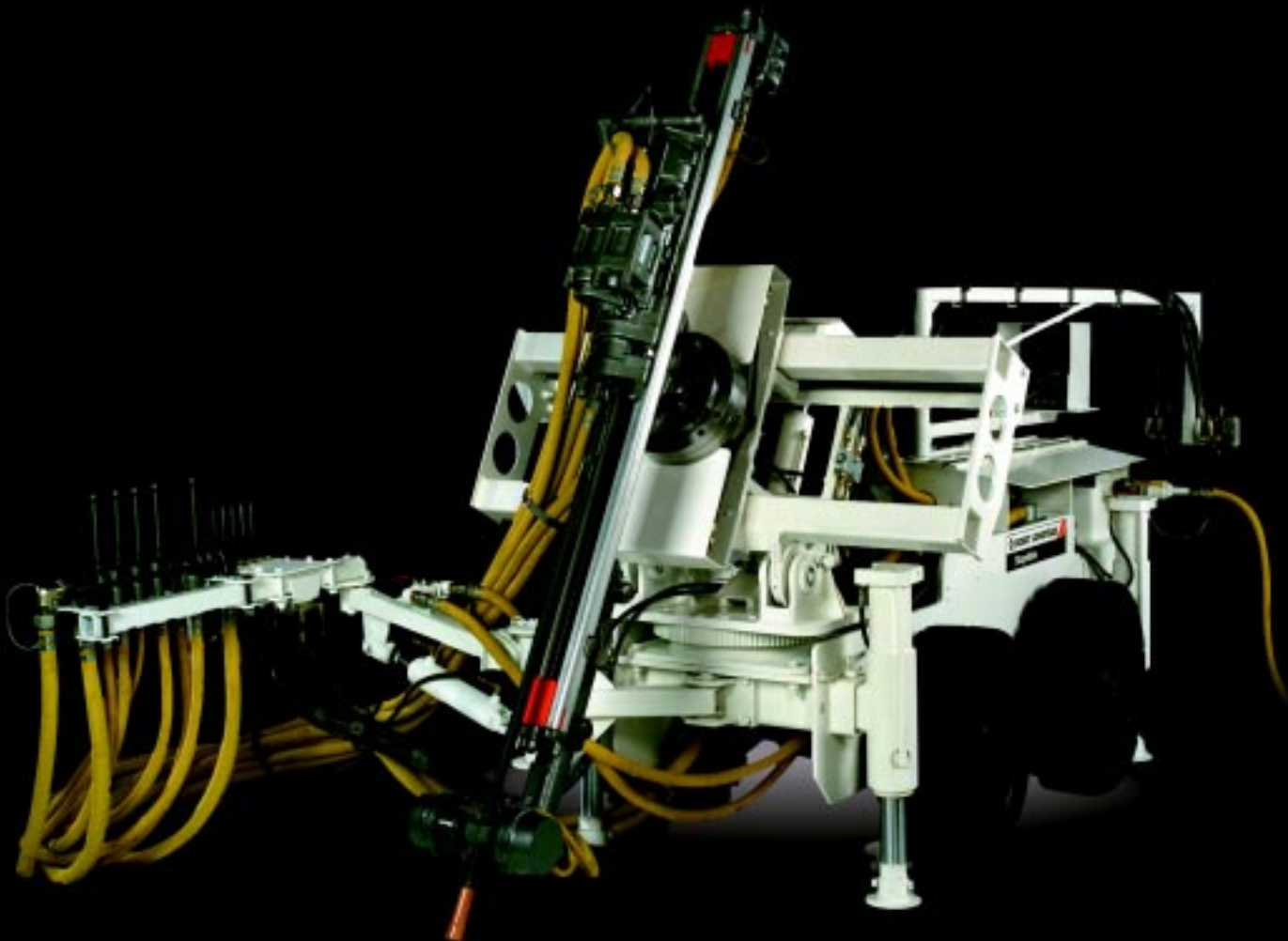
Boart Longyear Inc
159 Fielding Road
Lively, Ontario CANADA P3Y 1L7
Telephone (705) 682-0642
Facsimile (705) 682-4874
Toll Free **1-800-461-4092**



Company policy is one of continual development and any specifications contained in this literature may change without notice. Actual equipment may not be exactly as shown.



Boart Longyear Drilling System StopeMate Series Pneumatic Production Drill



Low Capital Cost

Low Maintenance

High Productivity

Easy to Use

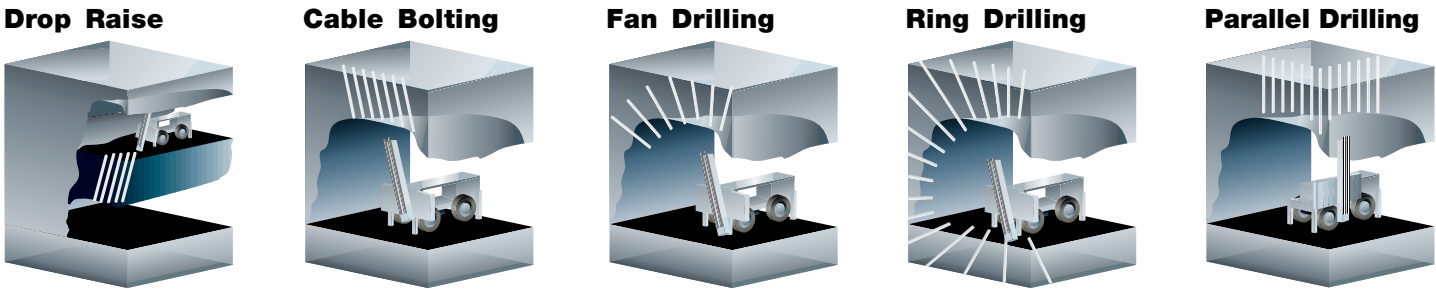
Fits Virtually Any
Drilling Situation

Versatile

StopeMate

Combining High Productivity and Performance with Low Cost and Low Maintenance

Drilling Versatility



StopeMate's Design, Engineering and Field Testing Delivers.

StopeMate draws upon and refines Boart Longyear's BCI 2 pneumatic drill. With over 180 BCI 2's delivered to customers worldwide since 1980, millions of feet of drilling and over a decade and a half of maintenance experience, Boart Longyear is ready to take this pioneering effort to the next level with the StopeMate.

The goal: deliver high productivity drilling and low cost in a compact package.



BCI 2 1980 - 1997



- Compact**
- to manoeuvre through confined spaces
 - ideal for narrow-vein applications

- Mobile**
- small and easily towed
 - easily hoisted through standard manway skip compartments
 - can be easily caged as a complete unit

- Simple**
- low maintenance cost
 - low demand maintenance
 - operator friendly

- Proven**
- high productivity in the field
 - reliable and durable
 - long service life

- Versatile**
- fits more drilling patterns than any other platform on the market
 - feed length options
 - pivoting traverse feature
 - hydraulic rotation

Unique by Design

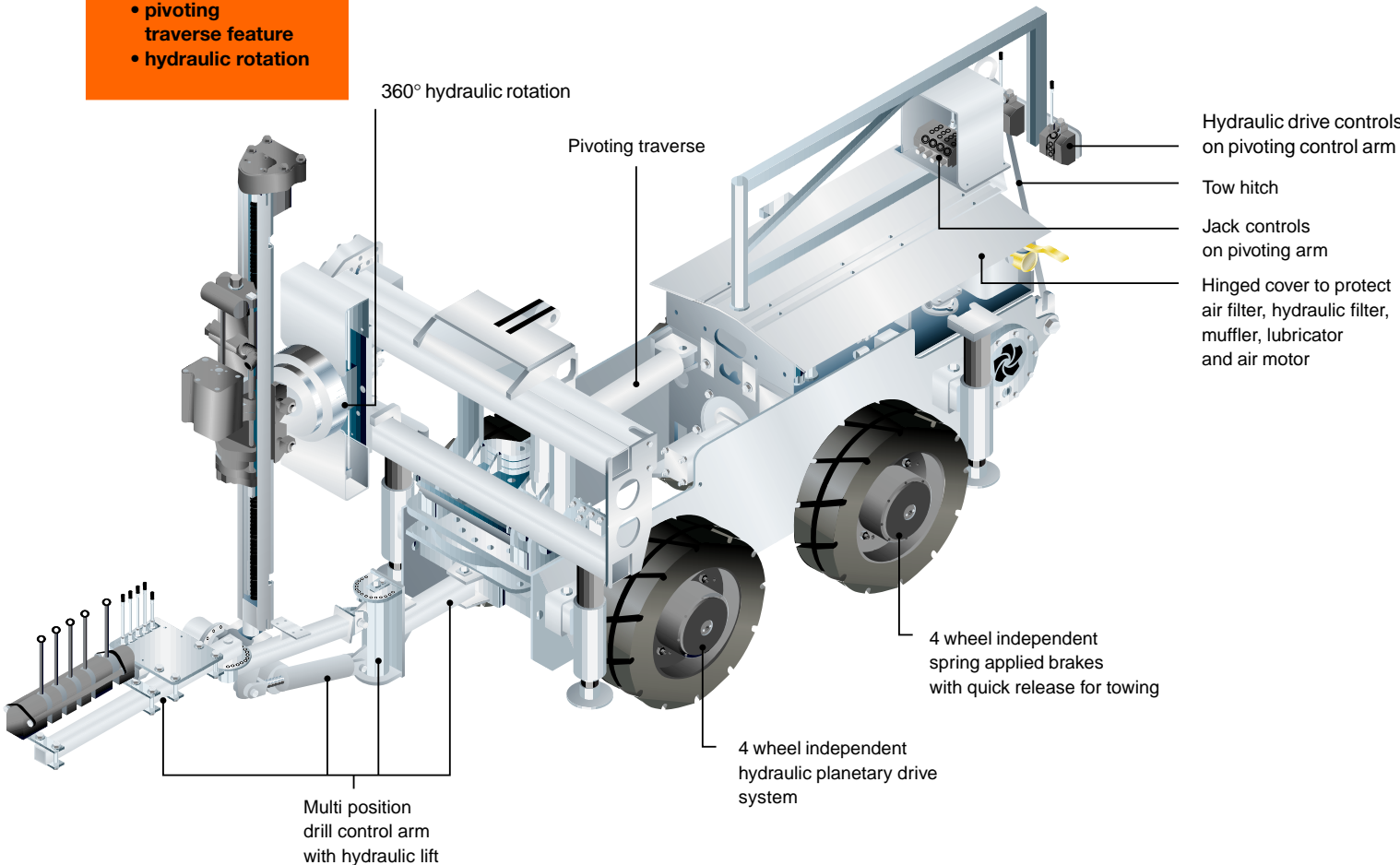
The StopeMate has been designed and tested from the ground up to satisfy the demands of the market for a simple and robust platform that can handle most, and especially the tightest, drilling requirements.

Sized to fit:

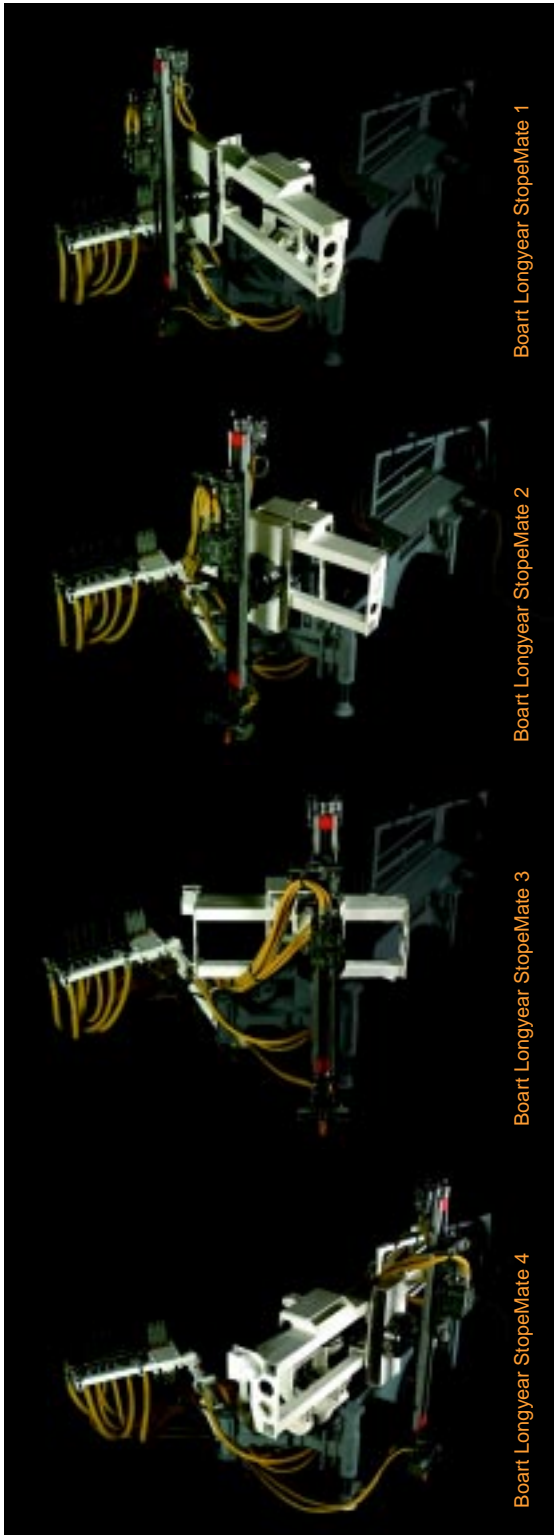
- with pivoting traverse feature, the StopeMate is able to tram through a 1.27M by 1.9M (50" x 75") opening
- with the positioner and feed removed, the StopeMate is able to tram through a 1.27M by 1.37M (50" x 54") opening
- as low as 2.44M (96") back height drilling
- cageable with no disassembly [as small as 1.22M x 1.73M (48" x 68")]

Designed to drill:

- 360° rotation
- up to 1.52M (60") side shift
- expanded versatility with pivoting traverse, allowing ring or parallel drilling beside the carrier
- 15.2cm (6") hole up to 45.72M (150') [drill and ream]



Ultimate positioning at the rock face



By combining the unique pivoting traverse feature (patent pending) with 360° rotation, -45°/+10° dump and side shift of the feed, the StopeMate captures virtually any hole. This innovative positioner design expands the flexibility and versatility of your machine, enabling you to increase your productivity at the face.