

Technical Description

The Tamrock Solo 510 RTS is a one-boom electrohydraulic long-hole drilling rig for medium scale production drilling in underground mines. The rig is capable of drilling up to 30 meters long holes.

The rig has been designed for production drilling in narrow vein type ore bodies. The rig is capable to drill vertical and inclined rings and fans and has also wide capacity for parallel long production holes as well as for long single holes.

The robust RTS boom has wide parallel drilling coverage compared to the width of the rig thanks to possibility for special drilling module swing on the sliding table. It has also 360° rotation and wide tilt angle ranges forward and backwards, thus offering wide drilling variety.

Quick and accurate alignment of the drilling module to the right plane is easy to adjust with positioning lights, carrier articulation and accurate angle reading system.

The layout has been designed to give good visibility and balance. This and the powerful four-wheel-driven center-articulated carrier ensure fast and safe tramming. The new operator environment with easy controlling allows the operator to concentrate on safe, fast and accurate drilling.

The drilling system allows drilling speeds substantially above those of conventional long-hole drilling rigs without sacrificing drill steel economy or machine reliability. An optional drilling steel handling system is fully mecha-

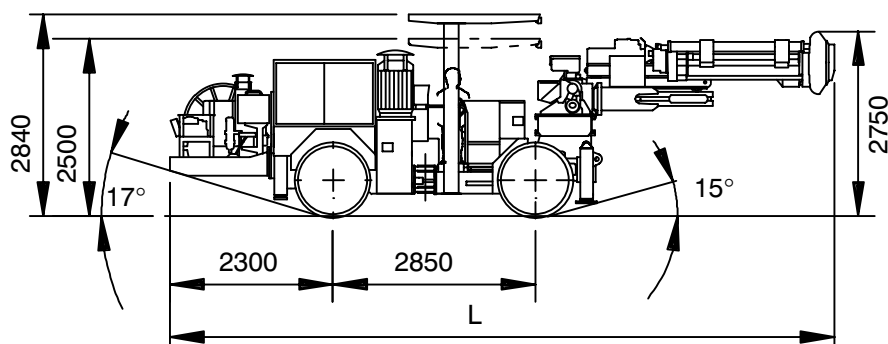
nised and the carousel versions have a capacity of 20 pieces of 1.2, 1.5 or 1.8 meters (4', 5', 6') long rods, 1 1/4" or 1 1/2".

The well protected electronic controls and de-centralized hydraulics mean less and easier service and maintenance. Service points are better protected but easier to access. Built-in diagnostics help to minimize the maintenance time.

Components in Basic Model

1. Carrier	1 x TC 100
2. Rock drill	1 x HL 510 LH
3. Drilling module	1 x LF 60x/Pito 11
4. Rod handling system	1 x RC 60x, option
5. Boom	1 x RTS 26
6. Control system	1 x TPC LH
7. Powerpack	1 x HPP 655, 55 kW
8. Oil cooler	1 x OW 30
9. Main switch	1 x MSE-10
10. Hydraulic jack	4 x HM 40
11. Water pressure valve	1 x WP 70 H
12. Water booster pump	1 x WBP 1, 4 kW
13. Central oiler	1 x KVL 10-1
14. Air cleaner	1 x IP 5
15. Compressor	1 x C 1000, 7.5 kW
16. Automatic cable reel	1 x AK 1
17. Lighting:	working: 2 x 500 W, 220 V, portable
	driving: 6 x 70 W, 24 V
18. Cuttings collector	1 x CC 611
19. Positioning lights	2 x Laser type

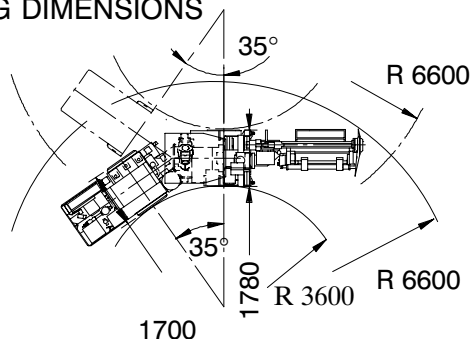
TRAMMING DIMENSIONS



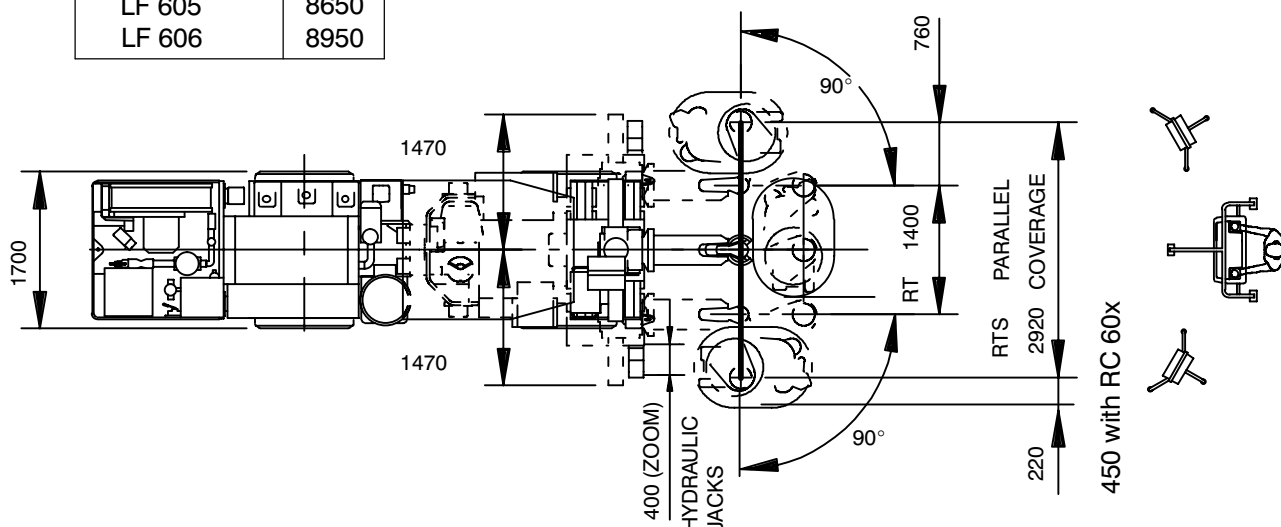
FEED	L
LF 604	8350
LF 605	8650
LF 606	8950

Tramming width 1780

TURNING DIMENSIONS



DRILLING DIMENSIONS



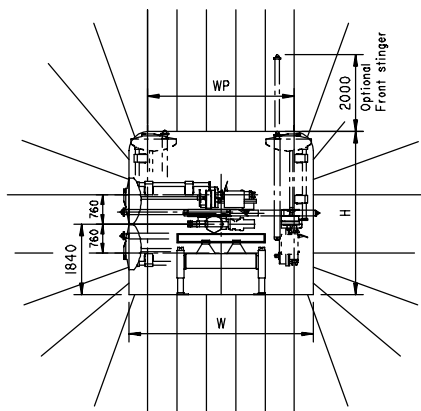
Main Weights, Dimensions and Performance

Length (in drilling position)	8000 mm
Width	1700 mm
Height, min. (driving)	2750 mm
max. (drilling)	3700 mm
Weight (basic model)	13000 kg

Tramming speed	
Horizontal	10 km/h
13% = 1:7 = 8°	3 km/h

Gradeability	23% = 1:4.3 = 15°
Ground clearance	300 mm

Noise level	
Operator worksite	104 dB(A)
ISO 6394-1985 (4 m from rig)	
Emitted noise level	101 dB(A)
ISO/DIS 11201-1993	



Minimum drift size

	H	W	WP
LF604	*3200	3000	2100
LF605	3300	3300	2400
LF606	3600	3600	2700

*3100 only upholes

Included about 150 mm clearance

Maximum drift size

	H	W	WP
LF604	3750	4300	2920
LF605	4050	4600	2920
LF606	4250	4800	2920